



THE CATALOG

pacers



CHARGER



COMET



STRATOS



AERO



GTX500

pacers



GEORGIA

southeasternskatesupply.com



VIRGINIA

seskate.com

THE SKATES

Kid's Skates	4-5
Low-Top Skates	8-21
High-Top Skates	24-33
Inline Skates	36-39
Hockey Skates	41

THE WHEELS

UniQ BOSS Wheels	44
Sure-Grip Wheels	44-50
Rollerbones Wheels	50-51
VNLA Wheels	52-53
Piper Wheels	53-55
FoMac Wheels	57

THE STUFF

Boots	58-59
Plates (Chassis)	62-64
Toes, Tools, & Stuff	65-67
Bearings	68-69
Boot Covers	70
Bags & Stuff	71

Why do we love roller rinks so much? That's where we got our start. Before moving into our over 60,000 square feet of combined warehouse space, we operated out of the Skate-A-Drome of Roanoke, VA. Unfortunately, that building burnt down in 1974. We now operate two separate locations that allow us to serve the nation.

We thank you so much for supporting your local roller rink or skate shop. Remember, they are the experts, and they are there to help you get the skates you want.



SCOUT ZTX

The Scout skate combines an iconic and timeless sneaker-style with the fun that is roller skating.

Boots: Pacer canvas boots featuring a classic look.

Chassis: Pacer polymer plates with a fixed toe stop.

Wheels: 54mm wheels give the skater a lower-profile for better balance.

Bearings: Sealed 608ZB bearings provide a consistent roll.

Sizes: Youth 12J-6 in Black, Berry Blast, Grape and Winter Green.

Price: \$



FUN ROLL ADJUSTABLE

Beginner skate featuring a low center of gravity and dual heel brakes to keep young skaters from falling backwards.

Boots: Plastic shell with deluxe-padded liners.

Chassis: Adjustable.

Bearings: G-Force 608ZB Sealed bearings.

Sizes: Blue or Pink in small (7J-11J) and medium (11J-2).

Price: \$

ELLA ADJUSTABLE

The Ella skate is an adjustable skate for indoors or outdoors.

Boots: Ankle support and a padded lining. The EZ Twist knob adjusts the size.

Chassis: Double-action trucks and fixed toe stop.

Wheels: Urethane indoor/outdoor wheels.

Bearings: Silver-5 speed rated bearings.

Sizes: Small (12J-2) and medium (3-6).

Price: \$



CHARGER

The Pacer Charger makes the perfect first pair of "real" skates.

Boots: Padded boots with velcro straps for added support.

Chassis: Pacer double-action.

Wheels: Polyurethane wheels with a nylon hub.

Bearings: G-Force 608ZB

Sizes: Black 10J-4, White 10J-4.

Price: \$



SUGAR 'N' SPICE

Sure-Grip's Sugar 'n' Spice brightens-up the rink with their light-up wheels.

Boots: Sure-Grip speed-style boots.

Chassis: Polymer plates with a fixed toe stop.

Wheels: Light-Up wheels work indoors or outdoors.

Bearings: Sealed 608ZB bearings provide a consistent roll.

Sizes: Black 10J-4, White 10J-4.

Price: \$

LIGHT
UP



COMET

The Pacer Comet is even better than it looks!

Boots: Gives younger skaters needed support with deluxe comfort padding.

Chassis: Fixed toe stop and dual-action trucks.

Wheels: Light-Up wheels.

Bearings: Silver ABEC-5 carbon speed bearings.

Sizes: Black 12J-5, White 12J-5.

Price: \$

LIGHT
UP





GTX-500 (P-223)

Pacer's GTX-500 remains the most-popular skate found in roller rinks throughout the country.

Boots: Synthetic boots with Velcro straps.

Chassis: Nylon plates with fixed toe stops.

Wheels: 57mm urethane wheels with mag hubs.

Bearings: Silver-Rated ABEC-5.

Sizes: Men's Black, Bk/Red (4-12);
Bk/Teal, White (4-10).

Price: \$



AERO

Pacer's Aero works the moment it's on your feet. This skate outperforms many of the more expensive skates on the market.

Boots: Deluxe Speed Profile boot with PU foam to provide better cushioning and enables a snug fit

Chassis: AMQ Pro Aluminum Chassis for precise control and 5/8 inch Adjustable toe stop.

Wheels: 60mm x 40mm urethane wheels.

Bearings: Bevo ABEC-5 bearings.

Sizes: Men's black 4-12.

Price: \$



RINCON

Sure-Grip's Rincon is a fun, new skate for in the rink or on the sidewalks.

Boots: Super-Duty vinyl boots with comfort padding.

Chassis: Nylon double-action.

Wheels: 62mm x 85A indoor/outdoor.

Bearings: Sure-Grip ABEC-5 speed bearings.

Sizes: Men's black and black with purple 4-10.

Price: \$



Sure Grip
SKATE CO.



CYCLONE

Sure-Grip's Cyclone harkens back to the days when the Carrera ruled the rinks.

Boots: Man-made materials with comfort padding and stitched soles.

Chassis: Rock double-action plates with adjustable toe stops.

Wheels: Sure-Grip Cyclone 62mm wheels.

Bearings: Sure-Grip ABEC-5 speed.

Sizes: Men's black 4-12.

Price: \$

CYCLONE OUTDOOR

Take the Sure-Grip Cyclone outside!

Boots: Man-made materials with comfort padding and stitched soles.

Chassis: Rock double-action plates with adjustable toe stops.

Wheels: Aerobic 62mm x 85A black, pink, blue, green, orange, purple, or red.

Bearings: Sure-Grip ABEC-5 speed.

Sizes: Men's black 4-12.

Price: \$





Sure Grip

SKATE CO.

REBEL

The Rebel's designed for the strong skater. Whether shuffling in the outside lane or getting ready for a bout.

Boots: Sure-Grip leather boots with box-toe comfort-fit, and stitched soles.

Chassis: Probe plates with adjustable toe stops.

Wheels: Sure-Grip Fugitive wheels.

Bearings: Sure-Grip ABEC-7 bearings.

Sizes: Men's black 3-13.

Price: \$

REBEL ION

Upgrade your Rebel with Piper Ion wheels.

Boots: Sure-Grip leather boots with box-toe comfort-fit, and stitched soles.

Chassis: Probe plates.

Wheels: Piper Ion 63.5mm in White (X-Fast) or Orange (XX-Fast).

Bearings: Sure-Grip ABEC-7 bearings.

Sizes: Men's black 3-13.

Price: \$



REBEL ZOMBIE

Upgrade your Rebel with Sure- Grip Zombies.

Boots: Sure-Grip leather boots with box-toe comfort-fit, and stitched soles.

Chassis: Probe plates.

Wheels: Sure-Grip Zombies in 57mm, 62mm Narrow, or 62mm Wide in Purple (89A), Black (92A), Red (95A), or Green (98A).

Bearings: Sure-Grip ABEC-7 bearings.

Sizes: Men's black 3-13.

Price: \$





GT-50

The GT-50 is one of the most popular skates ever produced. It offers comfort out-of-the-box by offering a little added width in the footbed, and it has extra padding around the ankle.

Boots: Rock GT-50 boots with Velcro strap.

Chassis: Rock double-action plates with adjustable toe stops.

Wheels: Black & white swirled GT-50 wheels.

Bearings: Sure-Grip ABEC-5 bearings.

Sizes: Men's black 1-15.

Price: \$



GT-50 ZOOM

Add some personality to your GT-50's by customizing your wheel color and lace color to fit your own style.

Boots: Rock GT-50 boots with Velcro strap.

Chassis: Rock double-action plates with adjustable toe stops.

Wheels: Sure-Grip 62mm Zoom wheels in pink, green, black, blue, red, or purple.

Bearings: Sure-Grip ABEC-5 bearings.

Sizes: Men's black 1-15.

Price: \$



GT-50 Freaky Fast

Upgrade your GT-50's with Piper's Freaky Fast wheels.

Boots: Rock GT-50 boots with Velcro strap.

Chassis: Rock double-action plates with adjustable toe stops.

Wheels: Piper 63.5mm Freaky Fast in purple/pink, black/green, or ivory/white.

Bearings: ABEC-7 bearings.

Sizes: Men's black 1-15.

Price: \$



ERA w/ CUSTOM LACE COVER

Choose your favorite lace cover for your ERAs.

Boots: Barefoot technology and UniQ Flex-Fit Tech combined with traditional machine lasting.

Chassis: BOSS double-action.

Wheels: 62mm, 95A hi-performance urethane.

Bearings: UniQ ABEC-7 bearings.

Lace Cover: Orange, Pink, Green, Gold, White, Pink Chrome, Pink & Purple, Black & White, Griffin Brothers.

Sizes: Men's black 5-14.

Price: \$





UNIQ ERA

The ERA combines comfort, styling, strength, and performance.

Boots: Barefoot technology and Flex-Fit Tech.

Chassis: BOSS plates deliver the perfect balance of strength, stiffness, weight and agility.

Wheels: 62mm, 95A wheels made of high-performance, high rebound urethane.

Bearings: UniQ ABEC-7 bearings.

Sizes: Men's black 5-14.

Price: \$



ORIGINALLY

UNIQ
SKATES
DIFFERENT



ERA BOSS

Features all-new BOSS Wheels.

Boots: Barefoot technology and Flex-Fit Tech.

Chassis: BOSS plates deliver the perfect balance of strength, stiffness, weight and agility.

Wheels: 62mm, 95A BOSS wheels with aluminum hubs.

Bearings: UniQ ABEC-7 bearings.

Sizes: Men's black 5-14.

Price: \$



ERA SHUFFLE

Upgrade your ERAs with Piper Shuffle wheels.

Boots: Barefoot technology and Flex-Fit Tech.

Chassis: BOSS plates deliver the perfect balance of strength, stiffness, weight and agility.

Wheels: Piper Shuffle 63.5mm, 95A wheels in White or Glow Green.

Bearings: UniQ SWISS bearings.

Sizes: Men's black 5-14.

Price: \$



ERA GRIFFIN PRO

Signature skate of the Griffin Brothers.

Boots: Barefoot technology and Flex-Fit Tech.

Chassis: BOSS plates deliver the perfect balance of strength, stiffness, weight and agility.

Wheels: Piper 63.5mm Griffin Brothers with gold aluminum hubs.

Bearings: ABEC-7 bearings.

Sizes: Men's black 5-14.

Price: \$



ERA OUTDOOR LITE

Take your ERA skates outdoors.

Boots: Barefoot technology and Flex-Fit Tech.

Chassis: BOSS plates deliver the perfect balance of strength, stiffness, weight and agility.

Wheels: Piper 65mm, 78A SuperLite outdoor wheels in Purple, Red, or White.

Bearings: ABEC-7 bearings.

Sizes: Men's black 5-14.

Price: \$





UNIQLY TWISTED

Twisted combination of style and performance.

Boots: UniQ Icon 180.

Chassis: Rock double-action plates.

Wheels: Twister 62mm wheels in Black/White, Blue/White, Green/White, Pink/White, Purple/White, Pink/Black, Purple/White, Red/Black, Blue/Yell/Grn.

Bearings: ABEC-7.

Sizes: 5-12 (halves 8.5-11.5).

Price: \$



THE MEDICINE MAN

A true performance skate for derby or speed.

Boots: UniQ Icon 180.

Chassis: Sure-Grip Avanti aluminum plates with 10 degree, and double-action trucks.

Wheels: Shaman 62mm wheels in Blue (89A), Green (93A), Red (95A), or White (97A).

Bearings: UniQ Swiss.

Sizes: 5-12 (halves 8.5-11.5).

Price: \$



OLD-SCHOOL - NEW SCHOOL

This skate has it all. A blend of old and new.

Boots: UniQ Icon 180.

Chassis: Laser 45 degree single-action trucks. The Laser plate requires 7mm bearings.

Wheels: Sure-Grip Zombies in 59mm, 62mm Narrow, or 62mm Wide in Purple (89A), Black (92A), Red (95A), or Green (98A).

Bearings: Bones REDS bearings in 7mm.

Sizes: 5-12 (halves 8.5-11.5).

Price: \$





MIX-TAPE

Features the Icon 360 boot from UniQ.

Boots: Icon 360

Chassis: Rock double-action plates with adjustable toe stops.

Wheels: BackSpin 62mm Remix wheels in White or Black with aluminum hubs.

Bearings: ABEC-7.

Sizes: 5-12 (halves 8.5-11.5).

Price: \$

UNIQ LEGEND

Boots: Icon 360.

Chassis: Sure-Grip Avanti magnesium plates with 10 degree, double-action trucks and adjustable toe stops.

Wheels: 63.5mm x 44mm Legend Pro Wheels in Purple (93A), Orange (95A), and Green (97A).

Bearings: UniQ Swiss.

Sizes: 5-12 (halves 8.5-11.5).

Price: \$



FULLY LEADED

Boots: Icon 360.

Chassis: RD Elite's Octane Magnesium may be dollar-for-dollar the best plate on the market. Features click truck adjustment and Pure urethane cushions.

Wheels: UpRock 62mm wheels with aluminum hubs..

Bearings: UniQ Swiss.

Sizes: 5-12 (halves 8.5-11.5).

Price: \$



WINGMAN

Boots: The UniQ Mavric carbon-fiber boot is heat-moldable to conform to the skater's foot.

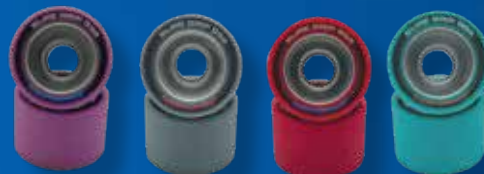
Chassis: Laser Elite Nylon plates with no toe stops and 45 degree single-action trucks. The Laser plate requires 7mm bearings.

Wheels: Monza 62mm in Purple (93A), Gray (95A), Red (95A), or Teal (97A).

Bearings: Bones REDS 7mm.

Sizes: 4-13 (halves 8.5-11.5).

Price: \$



GOOSE

Boots: The UniQ Mavric carbon-fiber boot is heat-moldable to conform to the skater's foot.

Chassis: RD Elite's Octane Magnesium.

Wheels: 63.5mm x 44mm Legend Pro Wheels in Purple (93A), Orange (95A), and Green (97A).

Bearings: UniQ Ceramic bearings.

Sizes: 4-13 (halves 8.5-11.5).

Price: \$



DANGEROUS

Boots: Carbon-fiber boot is heat-moldable to conform to the skater's foot.

Chassis: Power-Trac aircraft aluminum plates with micro adjustable 10-degree trucks. 7mm or 8mm trucks.

Wheels: 63.5mm x 44mm Legend Pro Wheels in Purple (93A), Orange (95A), and Green (97A).

Bearings: Bones REDS bearings.

Sizes: 4-13 (halves 8.5-11.5).

Price: \$





CR1 PACKAGE

The Monarch CR1 package is a new entry to the speed & performance level of skates.

Boots: Lightweight moldable fiberglass composite shell with microfiber.

Chassis: KING Omni chassis w/ Super Bounce toe stops.

Wheels: King Wheels 35mm x 62mm (90A)

Bearings: Gold 9-Rated chrome bearings.

Sizes: Men's black or white 5-13.

Price: \$

CR1 FREAKY DEAKY

Upgrade your CR1 with some Piper Freaky Fast wheels.

Boots: Lightweight moldable fiberglass composite shell with microfiber.

Chassis: KING Omni chassis w/ Super Bounce toe stops.

Wheels: Piper 63.5mm Freaky Fast in purple/pink, black/green, or ivory/white.

Bearings: Gold 9-Rated chrome bearings.

Sizes: Men's black or white 5-13.

Price: \$



CR1 TURBO

Upgrade your CR1 with some Bones Turbo high performance wheels.

Boots: Lightweight moldable fiberglass composite shell with microfiber.

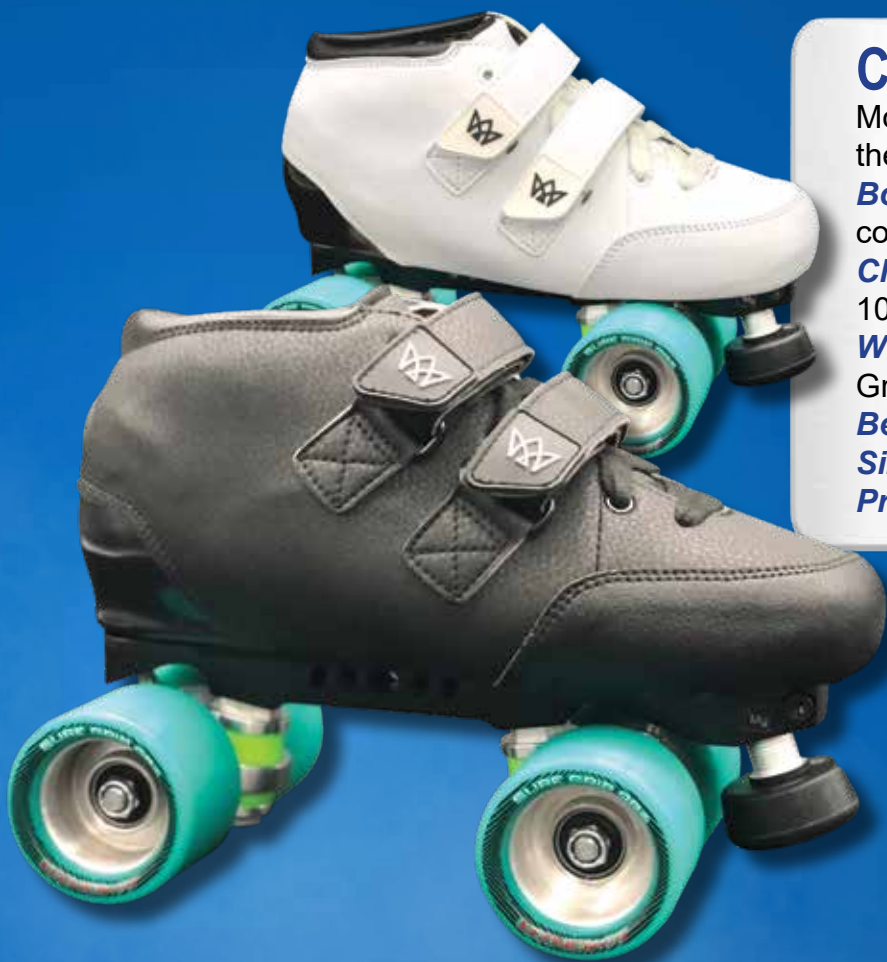
Chassis: KING Omni chassis w/ Super Bounce toe stops.

Wheels: Bones 62mm Turbo wheels in 92A, 94A, 97A, or 101A.

Bearings: Gold 9-Rated chrome bearings.

Sizes: Men's black or white 5-13.

Price: \$



CR1 GP MONZA

Monza is the Temple of Speed. This is the skate of speed.

Boots: Lightweight moldable fiberglass composite shell with microfiber.

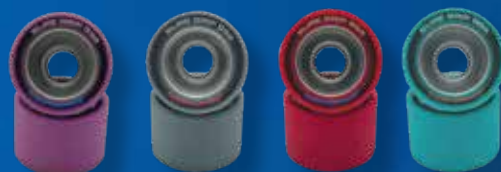
Chassis: Magnesium lightweight plates with 10 degree trucks and click adjustment.

Wheels: Monza 62mm in Purple (93A), Gray (95A), Red (95A), or Teal (97A).

Bearings: Kemistry SWISS Bearings.

Sizes: Men's black or white 5-13.

Price: \$



CR1 AXIS LEGEND

The Axis 45 degree plates allow you to hit the corners knowing you'll make the turn.

Boots: Lightweight moldable fiberglass composite shell with microfiber.

Chassis: Magnesium lightweight plates with 45 degree trucks and click adjustment.

Wheels: 63.5mm x 44mm Legend Pro Wheels in Purple (93A), Orange (95A), and Green (97A).

Bearings: Kemistry SWISS Bearings.

Sizes: Men's black or white 5-13.

Price: \$





VNLA JUNIOR

The most popular jam/session skate in the world. Are you really a skater if you've never had at least one pair of Juniors?

Boots: VNLA Junior model with durable liner.

Chassis: VNLA nylon "Gorilla" plates featuring aluminum double-action trucks.

Wheels: Backspin 62mm wheels with nylon hubs.

Bearings: ABEC-7.

Styles: Stealth (all-black), Code Red, Tuxedo (Blk & Wht), and Lagoon (Aqua & White).

Sizes: Men's 3-12 (Lagoon) and Men's 3-13 (all others).

Price: \$





VNLA FREESTYLE PRO

Vanilla's Freestyle boots combined with your choice of Backspin nylon-hubbed wheels.

Boots: Freestyle leather boots with stitched-leather soles.

Chassis: Vanilla "Gorilla" plates.

Wheels: Backspin wheels with nylon hubs.

Bearings: ABEC-7 bearings.

Sizes: Men's black 4-13.

Price: \$



VNLA FREESTYLE PRO PLUS

Vanilla's Freestyle boots combined with your choice of Backspin aluminum-hubbed wheels.

Boots: Freestyle leather boots with stitched-leather soles.

Chassis: Vanilla "Gorilla" plates.

Wheels: Backspin wheels with aluminum hubs.

Bearings: ABEC-7 bearings.

Sizes: Men's black 4-13.

Price: \$



VNLA FREESTYLE CLASSIC PRO

Vanilla's Classic boots combined with your choice of Backspin nylon-hubbed wheels.

Boots: Freestyle leather boots with stitched-leather soles.

Chassis: Vanilla "Gorilla" plates.

Wheels: Backspin wheels with nylon hubs.

Bearings: ABEC-7 bearings.

Sizes: Men's black 4-13.

Price: \$



VNLA FS CLASSIC PRO

Vanilla's Classic boots combined with your choice of Backspin aluminum-hubbed wheels.

Boots: Freestyle leather boots with stitched-leather soles.

Chassis: Vanilla "Gorilla" plates.

Wheels: Backspin wheels with aluminum hubs.

Bearings: ABEC-7 bearings.

Sizes: Men's black 4-13.

Price: \$



VANILLA
V-LINE

VNLA ANNIVERSARY PRO PLUS

Vanilla's Anniversary boots with your choice of Backspin aluminum-hubbed wheels.

Boots: Vanilla leather Anniversary boots.

Chassis: VNLA nylon "Gorilla" plates.

Wheels: Your choice of any Backspin wheels with aluminum hubs.

Bearings: ABEC-7 bearings.

Sizes: Men's white & blue 4-13.

Price: \$



EVOLUTION ROCK

VNLA's Evolution boots with Twister wheels.

Boots: VNLA's Evolution top-of-the-line boots.

Chassis: Rock double-action plates with adjustable toe stops or plugs.

Wheels: Sure-Grip 62mm Twister wheels.

Bearings: ABEC-7 bearings.

Sizes: Men's 4-13 (halves 7.5-10.5).

Price: \$

EVOLUTION DELUXE

This package features the Evolution boot from VNLA.

Boots: Made from top-grain leather, quilted liner, and stitched-leather sole.

Chassis: Sure-Grip Avanti plates.

Wheels: Backspin 62mm Deluxe wheels with aluminum hubs.

Bearings: ABEC-7.

Sizes: Men's 4-13 (halves 7.5-10.5).

Price: \$





WHERE CHAMPIONS REIGN

— SURE-GRIP —

BOARDWALK

SINCE 1937 CALIFORNIA

Roller Skates





SCOUT ZTX

The Scout skate combines an iconic and timeless sneaker-style with the fun that is roller skating. The Scout can be used indoors or outdoors.

Boots: Pacer canvas boots featuring a classic look.

Chassis: Pacer polymer plates.

Wheels: 54mm wheels for indoors or outdoors.

Bearings: Sealed 608ZB bearings provide a consistent roll.

Sizes: Youth 12J-6 in Black, Berry Blast, Grape and Winter Green.

Price: \$



ELLA ADJUSTABLE

The Ella skate is an adjustable skate featuring donuts, unicorns, ice cream, and catacorns. The Ella can be used indoor or outdoor.

Boots: High boots with ankle support and a padded lining. The EZ Twist knob adjusts the size.

Chassis: High-impact chassis with double-action trucks.

Wheels: Urethane 54mm x 32mm indoor/outdoor.

Bearings: Silver-5 speed rated bearings.

Sizes: Small (12J-2) and medium (3-6).

Price: \$



LIGHT UP

COMET

The Pacer Comet is even better than it looks!

Boots: Gives younger skaters needed support with deluxe comfort padding.

Chassis: Fixed toe stop and dual-action trucks.

Wheels: Light-Up wheels.

Bearings: Silver ABEC-5 carbon speed bearings.

Sizes: Black 12J-5, White 12J-5.

Price: \$



LILLY

The Rollr Grl Lilly are the cutest skates in the rink or in the park.

Boots: Man-made boots with comfort-lining.

Chassis: Nylon plates.

Wheels: 58mm x 33mm indoor/outdoor.

Bearings: ABEC-5 carbon bearings.

Sizes: Women's Blue & Pink 5-10 or Mint & Purple 5-10.

Price: \$



SPIN-R

Can be used indoors or outdoors.

Boots: Man-made boots with comfort-lining.

Chassis: Nylon plates with double-action trucks.

Wheels: 58mm x 33mm indoor/outdoor wheels.

Bearings: ABEC-5 carbon bearings.

Sizes: Men's Black 3-11.

Price: \$



ASTRA

Perfect for indoors or outdoors.

Boots: Man-made glitter boots.

Chassis: Lightweight aluminum chassis.

Wheels: Kemistry Glide 65mm great for indoor or outdoor use.

Bearings: ABEC-5 chrome bearings.

Sizes: Women's Silver 4-10 and Gold 3-10.

Price: \$



SLID-R

Perfect for indoors or outdoors.

Boots: Quality brushed faux-suede boot.

Chassis: Lightweight aluminum chassis.

Wheels: Kemistry Glide 65mm great for indoor or outdoor use.

Bearings: ABEC-5 carbon bearings.

Sizes: Men's Black 4-12.

Price: \$





TEAM SUEDE

Add Rollerbones wheels to your SlidR skates.

Boots: Brushed faux-suede boot.

Chassis: Lightweight aluminum chassis.

Wheels: Rollerbones 57mm or 62mm (98A or 101A) in Black, Blue, Green, Pink, Purple, White, or Yellow.

Bearings: ABEC-5 carbon bearings.

Sizes: Men's Black 4-12.

Price: \$



STRATOS

The best-priced high-top skate on the market.

Boots: Ankle support and a deluxe-comfort liner.

Chassis: Aluminum construction with a jump-bar.

Wheels: Urethane designed for indoor skating.

Bearings: Silver-5 rated.

Sizes: Men's black 3-12; Women's 3-10.

Price: \$



STRATOSPHERE

The best-priced high-top skate on the market.

Boots: Composite-reinforced with ankle support.

Chassis: Aluminum construction with a jump-bar.

Wheels: Fame indoor wheels in Black, White, Blue, Aqua, Pink, Prism, Clear Blue, Clear Pink, Clear Purple, or Clear Red.

Bearings: Silver-5 rated.

Sizes: Men's black 3-12; Women's 3-10.

Price: \$



SLIP SLIDING AWAY

Take your Stratos skates outside.

Boots: Composite-reinforced with ankle support.

Chassis: Aluminum construction with a jump-bar.

Wheels: Sure-Grip Oasis 57mm outdoor wheels in Aqua, Green, or Yellow.

Bearings: Silver-5 rated.

Sizes: Men's black 3-12; Women's 3-10.

Price: \$



MALIBU

This Sure-Grip skate can be used indoors or outdoors.

Boots: Leather-lined high-top boots.

Chassis: Sure-Grip plates with double-action trucks.

Wheels: 57mm indoor/outdoor wheels.

Bearings: 608z precision bearings.

Sizes: Men's black 1-12 or Ladies white 1-10.

Price: \$



SURE-GRIP FAME

The Sure-Grip Fame is the gold-standard for all-around great high-top skates.

Boots: Sure-Grip's #37 high-top art boots.

Chassis: Rock plates with double-action trucks.

Wheels: Sure-Grip Fame 57mm wheels.

Bearings: ABEC-5 bearings.

Sizes: Men's black 8J-14 and Women's White 9J-11.

Price: \$



FAME BLACK & GOLD

The Sure-Grip Fame is the gold-standard for all-around great high-top skates.

Boots: Sure-Grip's #37 high-top art boots.

Chassis: Rock plates with double-action trucks.

Wheels: Sure-Grip Fame 57mm wheels.

Bearings: ABEC-5 bearings.

Sizes: Men's black & gold 5-13.

Price: \$



TEAM FAME

Upgrade the roll of your Fame skates by adding Rollerbones Team Logo wheels.

Boots: Sure-Grip's #37 high-top art boots.

Chassis: Rock plates with double-action trucks.

Wheels: Rollerbones 57mm or 62mm (98A or 101A) in Black, Blue, Green, Pink, Purple, White, or Yellow.

Bearings: ABEC-5 bearings.

Sizes: Men's black 8J-14 and Women's White 9J-11.

Price: \$

MACFAME

Add a little slide to your Fame by upgrading with FoMac Premier wheels.

Boots: Sure-Grip's #37 high-top art boots.

Chassis: Rock plates with double-action trucks and adjustable toe stops.

Wheels: FoMac Premier wheels in Black, Brown, or Blue.

Bearings: ABEC-5 bearings.

Sizes: Men's black 8J-14 and Women's White 9J-11.

Price: \$



FAME MOTION

Take your Fames outside with Motion wheels.

Boots: Sure-Grip's #37 high-top art boots.

Chassis: Rock plates with double-action trucks and adjustable toe stops.

Wheels: Sure-Grip Motion 62mm outdoor wheels in Black, Clear Teal, Pink, Purple or Red.

Bearings: ABEC-5 bearings.

Sizes: Men's black 8J-14 and Women's White 9J-11.

Price: \$



FAME AVANTI FAME

Don't sacrifice comfort for performance.

Boots: Sure-Grip's #37 high-top art boots.

Chassis: Sure-Grip Avanti double-action aluminum plates.

Wheels: Fame indoor wheels in Black, White, Blue, Aqua, Pink, Prism, Clear Blue, Clear Pink, Clear Purple, or Clear Red.

Bearings: ABEC-7 bearings.

Sizes: Men's black 8J-14 and Women's White 9J-11.

Price: \$



DREAMY

Black & Gold Fame with All American Dream.

Boots: Sure-Grip's #37 high-top art boots.

Chassis: Rock plates with double-action trucks and adjustable toe stops.

Wheels: Sure-Grip All American Dream in Black, White, or Black & Gold.

Bearings: ABEC-7 bearings.

Sizes: Men's black & gold 5-13.

Price: \$



BOARDWALK TAN

The tan Boardwalk is pure SoCal. It's the traditional beach skate.

Boots: Leather suede Boardwalk boots.

Chassis: Rock plates with double-action trucks and adjustable toe stops.

Wheels: Sure-Grip Boardwalk 65mm wheels.

Bearings: ABEC-5 bearings.

Sizes: Men's Tan 5-12.

Price: \$



LUCKY FAME

Fame skates with Piper Lucky wheels.

Boots: Sure-Grip's #37 high-top art boots.

Chassis: Rock plates with double-action trucks and adjustable toe stops.

Wheels: Piper Lucky 98A wheels in red (50mm or 57mm).

Bearings: ABEC-7 bearings.

Sizes: Men's black 8J-14 and Women's White 9J-11.

Price: \$

FREESTYLE FAME

Fame skates with Piper Freestyle wheels.

Boots: Sure-Grip's #37 high-top art boots.

Chassis: Rock plates with double-action trucks and adjustable toe stops.

Wheels: Piper Freestyle 101A wheels in black (50mm or 57mm).

Bearings: ABEC-7 bearings.

Sizes: Men's black 8J-14 and Women's White 9J-11.

Price: \$



FLY FAME

Fame skates with Piper Fly wheels.

Boots: Sure-Grip's #37 high-top art boots.

Chassis: Rock plates with double-action trucks and adjustable toe stops.

Wheels: Piper Fly 103A wheels in black (57mm or 62mm).

Bearings: ABEC-7 bearings.

Sizes: Men's black 8J-14 and Women's White 9J-11.

Price: \$





BOARDWALK PLUS

Get outdoors with newly designed Boardwalk.

Boots: Leather suede Boardwalk boots.

Chassis: Rock plates with double-action trucks and adjustable toe stops.

Wheels: Sure-Grip Boardwalk 62mm wheels.

Bearings: ABEC-5 bearings.

Sizes: Men's Cinnamon, Blueberry, or Green 5-12.

Price: \$



MACBOARDWALK

Get inside with with FoMac Premier wheels.

Boots: Leather suede Boardwalk boots.

Chassis: Rock plates with double-action trucks and adjustable toe stops.

Wheels: Premier wheels in Black, Blue, or Brown.

Bearings: ABEC-7 bearings.

Sizes: Men's Cinnamon, Blueberry, or Green 5-12.

Price: \$



FAMOUS

The V-Line boot has a style all its own.

Boots: V-Line boot featuring man-made materials and micro-fiber padded lining.

Chassis: Gorilla plates with double-action trucks.

Wheels: Sure-Grip Fame wheels.

Bearings: ABEC-7 bearings.

Sizes: Men's black 5-13.

Price: \$

DIAMOND JOE

A fantastic combination from VNLA, Sure-Grip, Rollerbones, and Lynx.

Boots: VNLA V-Line boot.

Chassis: Avanti double-action aluminum plates.

Wheels: Rollerbones 57mm or 62mm (98A or 101A) in Black, Blue, Green, Pink, Purple, White, or Yellow.

Bearings: Lynx ABEC-7 bearings.

Sizes: Men's black 5-13.

Price: \$



PEACE & HARMONY

Toe stops aren't for everyone.

Boots: V-Line boot featuring man-made materials and micro-fiber padded lining.

Chassis: Sure-Grip Century NTS plates (no toe stop) with double-action trucks.

Wheels: FoMac Harmony clay wheels.

Bearings: Lynx ABEC-7 bearings.

Sizes: Men's black 5-13.

Price: \$



SAY IT LOUD

JB says to "Say It Loud!"

Boots: VNLA Godfather boots are full-grain leather with split-leather lining and stitched leather soles.

Chassis: Rock double-action plates in choice of colors.

Wheels: Rollerbones 57mm or 62mm (98A or 101A) in Black, Blue, Green, Pink, Purple, White, or Yellow.

Bearings: Lynx ABEC-7 bearings.

Sizes: Men's black 5-14.

Price: \$

NEW BAG

Papa's got a brand new one, and it is time for you to get one.

Boots: Full-grain leather Godfather boots.

Chassis: Sure-Grip Century plates with double-action trucks.

Wheels: Bones Elite wheels in 57mm or 62mm (101A or 103A, and color choice of black, clear, clear red, or natural).

Bearings: China Bones REDS.

Sizes: Men's black 5-14.

Price: \$



THE MACHINE

If you know the Godfather, then you know what we're talking about. This skate will get you as low as you need to go.

Boots: Full-grain leather Godfather boots.

Chassis: Sure-Grip Lo-RIDE plates with double-action trucks. These can be set to different heights. Please request low, medium, or normal heights, and keep in mind that some wheels may not be able to be at the lower settings.

Wheels: FoMac MiniMac 55mm wheels in black or brown.

Bearings: Lynx ABEC-7 bearings.

Sizes: Men's black 5-14.

Price: \$

ULTIMATE
BOSS
UNIQSKATES.COM



ORIGINALLY
Uniq
SKATES
DIFFERENT



UNIQSKATES.COM

ERA

Uniq
SKATES



PERFORMANCE

ULTIMATE
BOSS
QUAD PLATES



TRACER (I-150)

Adjustable youth skates.

Boots: Soft liners offer comfort and support.

Frames: Reinforced polymer frames.

Wheels: Urethane wheels for indoor or outdoor use.

Bearings: G-Force 608ZB.

Sizes: Green or Pink in small (11J-1) and medium (2-5).

Price: \$

ROLLER GRL OCEAN SHORE

A fun and stylish skate for the skater that still wants quality components and unique design.

Boots: High-impact polymer shell with form comfort padded liners.

Chassis: High-impact polymer chassis.

Wheels: Kemistry 72mm indoor/outdoor fitness wheels.

Bearings: Bevo Silver-5 speed rated bearings.

Sizes: Men's Grapemallow and Angelmint 4-10.

Price: \$



OCEAN SHORE GHOST

A fun and stylish skate for the skater that still wants quality components and unique design.

Boots: High-impact polymer shell with form comfort padded liners.

Chassis: High-impact polymer chassis.

Wheels: Kemistry 72mm indoor/outdoor fitness wheels.

Bearings: Bevo Silver-5 speed rated bearings.

Sizes: Men's Black 4-12.

Price: \$





AERIO Q-60

High-performance fitness skates from Roller Derby.

Boots: Soft-boot design with comfort memory-foam padding.

Frames: Aluminum Tri-Coil frames.

Wheels: 80mm Elite Speed wheels.

Bearings: Bevo Gold-7 speed rated bearings.

Sizes: Men's Black 5-12 and Women's White 5-10.

Price: \$



BETA

A tough street skate from Roller Derby.

Boots: Molded boots with lateral support system and quick-dry comfort weave liner.

Frames: Hybrid Series aluminum frames.

Wheels: Kemistry Magnium 80mm (sizes 8-12) and 76mm (sizes: 5-7).

Bearings: Gold-7 race-rated bearings.

Sizes: Men's black 5-12.

Price: \$



ROCES FCO

Solid "old-school" inline that is made for abuse. Perfect for people with larger feet that need something sturdy.

Boots: Polyurethane shell features laces and a buckle for a proper fit.

Frames: Glass fiber reinforced nylon.

Wheels: Roces 73mm x 82A.

Bearings: ABEC-5

Sizes: Men's 12, 13, & 14.

Price: \$



ROCES BIG ZYX

A big skate for big feet. This inline is for those that are always having a hard time finding their size.

Boots: Glass reinforced shell with anatomical padding and “cool breath” material.

Frames: Glass fiber reinforced nylon.

Wheels: Roces 90mm x 82A.

Bearings: ABEC-5.

Sizes: Men's 16, 17, & 18.

Price: \$



ALPHA 110MM

The Alpha offers the speed of a racing skate, but the molded boot gives comfort for training or distance racing.

Boots: Molded shell featuring dual buckles and comfort weave liner.

Frames: Hybrid Series aluminum frames.

Wheels: World Record Racing 110m wheels (85A).

Bearings: Bevo race rated ABEC-5 speed bearings.

Sizes: Men's 4-13.

Price: \$



DELTA

A true fitness skate with 110mm wheels that also has the convenience of a heel brake.

Boots: Features a lateral support system with memory comfort foam padding.

Frames: Hybrid Series aluminum frames.

Wheels: Kemistry Magnum 110mm wheels.

Bearings: Gold-7 race-rated bearings.

Sizes: Men's Black & Teal 5-12.

Price: \$



ALPHA 125MM

Similar to the Alpha 110mm, but this skate features 125mm wheels and upgraded bearings for the more experienced skater.

Boots: Molded shell featuring dual-action buckles and comfort weave liner.

Frames: Hybrid Series aluminum frames.

Wheels: 125mm race wheels (85A).

Bearings: Bevo race rated ABEC-7 speed bearings.

Sizes: Men's 4-13.

Price: \$

UNIQ Q7 ADJUSTABLE

The Q7 delivers the unbelievable power to skate faster through an unequaled combination of skate quality, comfort, power, and skate anywhere range.

Boots: Micro-adjustable buckles, microfiber uppers, and SBR ankle padding.

Frames: Extruded, 6000 T6 aircraft aluminum.

Wheels: 86A, all-purpose indoor/outdoor, high rebound for speed and longevity.

Bearings: UniQ ABEC 7 precision race bearings.

Sizes: Small 13J-2 Frame 10.50, 3x90 stock (optional 4x84), Large 2-5 Frame 11.20, 3x100 stock (optional 4x90).

Price: \$



UNIQ Q8

The ultimate speed skate for indoor, outdoor, speed, fitness, and recreation.

Boots: Microfiber upper & inside lining, pre-shaped tongue. Fiber composite, stiff but forgiving for comfort fused with performance.

Frames: Extruded 6061-T6 aircraft alloy 4X110

Wheels: High-rebound urethane 86A.

Bearings: UniQ ABEC 7 precision race bearings.

Sizes: Mens 5-12.

Price: \$



7

JR'S



ORIGINALY
Uniq
SKATES
DIFFERENT

Distributed by SouthEastern Skate Supply



TOUR CODE DK9

Best-valued skate on the market.

Boots: Sculptured air pressure molding w/ moisture wicking liner, reinforced ankle support and deluxe comfort padding.

Frames: TOUR® Aluminum Powertrack Tri Coil XT 3

Wheels: Kemistry Niton wheels. Size 6: 76mm; Sizes 5-12: 80mm.

Bearings: Kemistry Good 7 Bearings

Sizes: 6-12.

Price: \$



TOUR VOLT KV8

The Volt KV8 features an all new Bionik Series 4 molded composite quarter construction, increased comfort and protection

Boots: Pillow-padded liner w/ Bionik Series 4 Quarter Panel.

Frames: "Frame Fuse" Split frame technology

Wheels: Kemistry Supra wheels. Size 6: 72mm/76mm; Sizes 7-12: 76mm/80mm.

Bearings: Kemistry Good 5 Bearings

Sizes: 7-12.

Price: \$



TOUR VOLT KV6

Comfort Soft Microfiber Liner & advanced H3 Custom Foam Blends offers balance of comfort & performance.

Boots: Pillow-padded liner w/ Bionik Series 4 Quarter Panel.

Frames: "Frame Fuse" Split frame technology

Wheels: Kemistry Supra wheels. Size 6: 72mm/76mm; Sizes 7-12: 76mm/80mm.

Bearings: Kemistry Good 7 Bearings

Sizes: 6-12.

Price: \$



BACKSPIN

PIPER

W H E E L S



THE FUTURE OF THE LEGACY



UNIQ STYLE

The same great wheel featured on the ERA skates.

Use: Indoor Speed Recreation.

Color/Hardness:

White (95A)

Size: 62mm x 42mm.

Price: \$

ORIGINALLY
uniQ
SKATES
DIFFERENT



UNIQ BOSS

New aluminum-hubbed wheel from UniQ

Use: Indoor Speed Recreation.

Color/Hardness:

White or Black (95A).

Size: 62mm x 42mm.

Price: \$

ORIGINALLY
uniQ
SKATES
DIFFERENT



CLAWZ

Use: Indoor Speed Recreation.

Color: Black, Orange, Pink, Purple, Red, Blue.

Size: 62mm x 42mm.

Price: \$



ZOOM

Use: Indoor Speed Recreation.

Color: Black, Blue, Green, Pink, Purple, Red.

Size: 62mm x 42mm.

Price: \$

Sure Grip
SKATE CO.



TWISTER

There are two new colors to the Twister line-up for this year.

Use: Indoor Speed Recreation

Color: Black/Pink, Black/White, Blue/White, Green/White, Pink/White, Purple/White, Red/White, Red/Black, and Blue/Yellow/Green.

Size: 62mm x 42mm.

Price: \$

Sure Grip
SKATE CO.

CANNIBAL

The original VooDooThane wheel.

Use: Indoor Speed Performance

Hub: Aluminum

Color/Hardness: Blue (92A), Orange (96A).

Size: 62mm x 42mm

Price: \$

Sure Grip
SKATE CO.





ZOMBIE

Use: Indoor Speed Performance

Hub: Aluminum.

Color/Hardness: Purple Hub (89A), Black Hub (92A), Red Hub (95A), Green Hub (97A).

Size: Low (59mm x 38mm), Mid (62mm x 38mm), Max (62mm x 42mm).

Price: \$

Sure Grip
SKATE CO.

MONZA

Use: Indoor Speed Performance

Hub: Aluminum.

Size: 62mm x 42mm.

Color/Hardness: Purple (93A), Grey (95A), Red (95A), Teal (98A).

Price: \$

Sure Grip
SKATE CO.



SHAMAN

Use: Indoor Speed Performance

Hub: Blue aluminum.

Size: 62mm x 42mm.

Color/Hardness: Blue (89A), Green (93A), Red (95A), White (97A).

Price: \$

Sure Grip
SKATE CO.



FAME

Use: Indoor Traditional Dance.

Size/Hardness: 57mm x 31mm / 95A.

Color: Black, White, Blue, Aqua, Light Pink.

Price: \$

Sure Grip
SKATE CO.



FAME DELUXE

Use: Indoor Traditional Dance.

Size/Hardness: 57mm x 31mm / 95A.

Color: Clear Pink, Clear Purple, Clear Red, Clear Teal, Pearl.

Price: \$

Sure Grip
SKATE CO.



WOOD

Use: Old-school Shuffle Slide.

Size/Hardness: 50mm x 38mm (Hard/Slick).

Price: \$

Sure Grip
SKATE CO.



MAPLE SLIDER

Use: Old-school Shuffle Slide.

Size/Hardness: 48mm x 31mm (Hard/Slick).

Price: \$

Sure Grip
SKATE CO.



VELVET

Use: Old-School Rhythm Dance.

Size/Hardness:

57mm x 30mm (Hard).

Color: Black, Blue, Red, Pink, White, Green.

Price: \$

Sure Grip
SKATE CO.



AA PLUS

Use: Old-School Rhythm & Dance.

Size/Hardness:

57mm x 30mm (Hard/Slick).

Color: Black, White.

Price: \$

Sure Grip
SKATE CO.



AA GOLD

Use: Old-School Rhythm & Dance.

Size/Hardness:

59mm x 30mm (Hard/Slick).

Color: FoMac Gold

Price: \$

Sure Grip
SKATE CO.



AA DREAM

Use: Old-School Rhythm & Dance.

Hub: Aluminum.

Size/Hardness:

57mm x 30mm (Hard/Slick).

Color: Black, White, Black & Gold.

Price: \$

Sure Grip
SKATE CO.



PHENOLIC

Use: Old-School Rhythm & Dance.

Size/Hardness:

38mm x 33mm (Hard/Slick).

Color: Brown, Black.

Price: \$

Sure Grip
SKATE CO.



OASIS

Use: Outdoor Recreation.

Size/Hardness: 57mm x 33mm (82A).

Color: Aqua, Green, Yellow.

Price: \$

Sure Grip
SKATE CO.



GRAVITY

Use: Outdoor Performance.

Size/Hardness: 62mm x 35mm (78A).

Color: Blue Glitter, Pink Glitter.

Price: \$

Sure Grip
SKATE CO.



AEROBIC

The Aerobic has been the go-to outdoor wheel for over 3 decades.

Use: Outdoor Recreation.

Size/Hardness: 62mm x 38mm (85A).

Color: Black, Blue, Green, Orange, Red, Pink, Purple.

Price: \$

Sure Grip
SKATE CO.



MOTION

This wheel fits most skates, and at 62mm gives an excellent roll.

Use: Outdoor Performance.

Size/Hardness: 62mm x 38mm (78A).

Color: Black, Pink, Purple, Red, Teal.

Price: \$

Sure Grip
SKATE CO.



BOARDWALK

65mm wheel offers a smooth ride. The Boardwalk has been setting the standard in outdoor quad wheels the past several years.

Use: Outdoor Performance.

Size/Hardness:

65mm x 38mm (78A).

Color: Blue, Pink, Purple, Red, Key Lime, Lavender, Sea Breeze, Tea Berry.

Price: \$

Sure Grip
SKATE CO.



PET

Use: Derby Speed Performance.

Size: 59mm x 38mm.

Color/Hardness: Black (92A, 94A).

Price: \$



NITRO

Use: Derby Speed Performance.

Hub: Aluminum.

Size: 59mm x 38mm.

Color/Hardness: Black (92A, 94A, 97A, 101A).

Price: \$



DAY OF THE DEAD

Use: Derby Speed Performance.

Size: 62mm x 40mm.

Color/Hardness: Black (92A, 94A).

Price: \$



TURBO

Use: Derby Speed Performance.

Hub: Aluminum.

Size: 62mm x 40mm.

Color/Hardness: Black (92A, 94A, 97A, 101A).

Price: \$





ROLLERBONES TEAM

One of the best rink wheels made.

Use: Indoor Traditional Rhythm Dance.

Size: 57mm, 62mm.

Hardness: 98A, 101A.

Color: Black, Natural, Green, Pink, Purple, Blue, Yellow.

Price: \$

ROLLERBONES



ROLLERBONES ELITE

The perfect wheel for competing at Nationals or attending a skate weekend in Atlanta. The Elites never let you down.

Use: Competitive Artistic Rhythm.

Size: 57mm x 30mm, 62mm x 30mm.

Hardness: 101A, 103A.

Color: Black, Clear, Natural, Clear Red.

Price: \$



REMIX LITE

Use: Speed Jam Recreation.

Size/Hardness: 62mm x 42mm (92A).

Color: Black, White.

Price: \$



REMIX

Use: Speed Jam Performance.

Hub: Aluminum.

Size/Hardness: 62mm x 42mm (92A).

Color: Black, White.

Price: \$



DELUXE

Use: Speed Jam Performance.

Hub: Aluminum.

Size: 62mm x 42mm.

Color/Hardness: Blue (92A), Red (95A), Purple (97A).

Price: \$



UPROCK

Use: Speed Jam Performance.

Hub: Aluminum.

Size: 62mm x 42mm.

Color/Hardness: Pink (92A), Blue (92A), Black (95A), Red (95A).

Price: \$



ECLIPSE

Use: Speed Jam Performance.

Hub: Aluminum.

Size: 59mm x 38mm (Black and Orange Hub), 62mm x 38mm (Orange and Oil Slick Hub).

Color/Hardness: Black Hub (95A), Oil Slick Hub (95A), Orange Hub (97A).

Price: \$



ASTRO

Use: Speed Jam Performance.

Hub: Aluminum.

Size: 58mm x 38mm, 65mm x 43mm

Color/Hardness: Green w/ Black Hub (96A), Pink w/ Blue Hub (96A), Orange w/ Gold Hub (98A).

Price: \$



FREAKY FAST

Smooth as butter, right for any surface

Use: Speed Jam Shuffle Session.

Size: 63.5mm x 44mm.

Color/Hardness: Purple & Pink, Black & Green, White (X-Fast).

Price: \$



ION PRO

The original Voodoothane.

Yes, they have that original smell.

Use: Speed Jam Shuffle Session.

Size: 63.5mm x 44mm.

Color/Hardness: White (X-Fast), Orange (XX-Fast).

Price: \$





SHUFFLE JR.

Smaller Shuffle wheel with the SuperG formula.

Hub: Hybrid nylon.

Use: Jam Shuffle Session.

Size: 59mm x 38mm.

Color/Hardness:

White (95A).

Price: \$



SHUFFLE

Shuffle wheel with the SuperG formula.

Hub: Aluminum.

Use: Jam Shuffle Session.

Size: 63.5mm x 44mm.

Color/Hardness:

Mint Glow, White (95A).

Price: \$



GRIFFIN BROS.

Signature Shuffle/Jam wheels from the Griffin Brothers.

Hub: Aluminum.

Use: Speed Jam Shuffle Session.

Size: 63.5mm x 44mm.

Color/Hardness: Black (95A).

Price: \$



LEGEND PRO

The original Voodoothane. Yes, they have that original smell.

Hub: Aluminum.

Use: Speed Jam Shuffle Session.

Size: 63.5mm x 44mm.

Color/Hardness:

Purple (Fast),

Orange (X-Fast),

Green (XX-Fast).

Price: \$





LUCKY

Use: Indoor Traditional Rythm Dance.

Size: 50mm x 30mm, 57mm x 30mm.

Color/Hardness: Red (95A).

Price: \$



FREESTYLE

Use: Indoor Traditional Rythm Dance.

Size: 50mm x 30mm, 57mm x 30mm.

Color/Hardness: Black (97A).

Price: \$



FLY

Use: Indoor Traditional Rythm Dance.

Size: 57mm x 30mm, 62mm x 30mm.

Color/Hardness: White (101A).

Price: \$



CORSA

Use: Outdoor Speed Race.

Size: 65mm x 38mm, 70mm x 38mm.

Color/Hardness: Yellow (88A).

Price: \$



HUSTLE

Use: Outdoor Recreation.

Size/Hardness: 62mm x 30 mm (78A).

Color: Red, Purple, White.

Price: \$







MINI-MAC BROWN

The brown Mini-Mac comes with a super-hard outer rim for sliding.

Use: Shuffle Rhythm Dance.

Size: 45mm x 30mm.

Hardness: 103A (Clay).

Color: Brown.

Price: \$



MINI-MAC BLACK

The black Mini-Mac does not have the super-hard outside rim.

Use: Shuffle Rhythm Dance.

Size: 45mm x 30mm.

Hardness: 103A (Clay).

Color: Black.

Price: \$



SLICKS

Similar to the Mini-Mac, but allows for even more sliding.

Use: Shuffle Rhythm Dance.

Size: 45mm x 30mm.

Hardness: 103A (Clay).

Color: Brown.

Price: \$



FREESTYLE

The clay wheel that started it all for Fo-Mac.

Use: Shuffle Rhythm Dance.

Size: 57mm x 30mm.

Hardness: 103A (Clay).

Color: Black.

Price: \$



PREMIER

The Premier is a hard, clay wheel with an even harder outer rim that allows for sliding.

Use: Shuffle Rhythm Dance.

Size: 57mm x 30mm.

Hardness: 103A (Clay).

Color: Black, Brown, Blue.

Price: \$



HARMONY

Basically the same wheel as the Premier, but with a great black & white look.

Use: Shuffle Rhythm Dance.

Size: 57mm x 30mm.

Hardness: 103A (Clay).

Color: White w/ Black.

Price: \$





MONARCH CR1

These boots feature a lightweight design and a durable fiberglass composite shell for a customizable fit. The velcro 'Power Straps' are removable for a secure fit, while the built-in microfiber liner adds extra comfort.

Sizes: Men's Black or White 5-13.

Price: \$



VNLA FREESTYLE

Vanilla offers a classic style with their Freestyle boot. It features top-grain leather with leather stitched soles.

Sizes: Men's 4-13.

Price: \$



VNLA CLASSIC PRO

Similar boot as the Freestyle, but it comes with a different color pattern. The Classic Pro features top-grain leather with leather stitched soles.

Sizes: Men's 4-13.

Price: \$



VNLA ANNIVERSARY

The same boot as the Freestyle with different color pattern. The Anniversary also features top-grain leather with leather stitched soles.

Sizes: Men's 4-13.

Price: \$



VNLA EVOLUTION

All-new boot from VNLA. Genuine leather uppers with black suede accents. The padded Cambrelle lining offers comfort and dryness.

Sizes: Men's 4-13; Half Sizes 5.5-10.5 (Boots run one size small).

Price: \$



UNIQ ICON 180

Features a nylon UniQ-Flex-Tech Outsole which offers some moldability to the foot for a custom-like fit. Boots come with heel risers to create the heel lift many skaters need.

Sizes: Men's 5-12; Half Sizes 8.5-11.5.

Price: \$



UNIQ ICON 360

Features a nylon UniQ-Flex-Tech Outsole which offers some moldability to the foot for a custom-like fit. Boots come with heel risers to create the heel lift many skaters need.

Sizes: Men's 5-12; Half Sizes 8.5-11.5.

Price: \$



UNIQ MAVRIC

The Mavric features a heat moldable carbon outsole which offers ultimate moldability to fit the skater's foot. Boots come with heel risers to create the heel lift many skaters need.

Sizes: Men's 4-13. Half Sizes 5.5-11.5.

Price: \$



#37 FAME

Sure-Grip's super-comfortable boots feel great right out of the box.

Sizes: Men's Black 13J-14;
Women's White 11J-11.

Price: \$



VNLA V-LINE

The V-Line microfiber boot from Vanilla features stitched soles and beautiful styling. Great boot for a bold-looking skate setup.

Sizes: Men's 5-13.

Price: \$



VNLA GODFATHER

This is the perfect boot for those late-night skate parties. A super high-top boot with a shearing tongue. The boot is soft enough to fold over.

Sizes: Men's black 5-14.

Price: \$



LoRide

Three plates in one. A unique plate concept that allows you to raise or lower the height of your plate, 3 different heights. Produced in the USA and using all Sure-Grip parts.

Avanti

Sure-Grip brings you the next generation in plate design, the Avanti. Offered in both Magnesium and Aluminum, this 10 degree double action plate is built to last. With our exclusive use of magnesium in plate construction, we've crafted a sleek hollow design to give skaters performance and durability without sacrificing lightness.

We've made mounting easy by including four mounting holes in the front of the plate to aid in mounting different boot types. Mounting hardware included.

The Avanti Magnesium Plate includes a newly designed precision adjustable pivot truck that can withstand the intensity while giving you balance and durability, both the truck and plate are powder coated with a white finish. The Avanti Aluminum Plate includes a standard fixed pivot double action truck, both polished aluminum.





OCTANE MAGNESIUM

Magnesium plate comes with Precision Click trucks and Pure urethane cushions. This is one of our favorite plates.

Price: \$



AXIS MAGNESIUM

Magnesium plates with 45 degree aluminum trucks and adjustable toe stops.

Price: \$



ROCK PLATES

The most reliable and affordable replacement plates available. Available in nine different colors to help customize your skates.

Price: \$



JUNIOR PRO

Cast aluminum plates with fixed toe stops and 10 degree double-action trucks.

Price: \$



SUPER-X

Cast aluminum plates with fixed toe stops and 10 degree double-action trucks.

Price: \$



COMPETITOR

Cast aluminum plates with adjustable toe stops, jump bars, and 10 degree double-action trucks.

Price: \$



INVADER

Cast aluminum plates with adjustable toe stops, jump bars, and 45 degree single-action trucks.

Price: \$

XK-4

Forged aluminum plates with racing profile, 45 degree single-action trucks, and adjustable toe stops.

Price: \$

XK-4DA

Forged aluminum plates with racing profile, 10 degree double-action trucks, and adjustable toe stops.

Price: \$



AVANTI ALUMINUM

10 degree, double-action, aircraft-grade aluminum plate with adjustable stops.

Price: \$



AVANTI MAGNESIUM

10 degree, double-action, magnesium plate with adjustable stops.

Price: \$



AVENGER ALUMINUM

45 degree, double-action, aircraft-grade aluminum plate with adjustable stops.

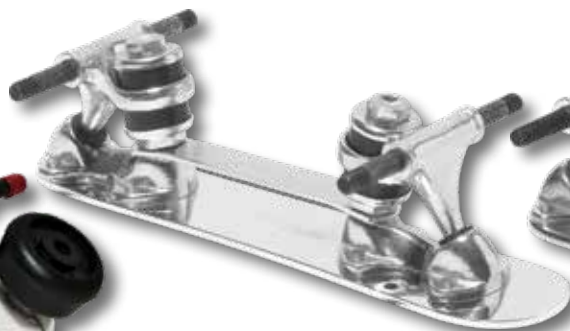
Price: \$



AVENGER MAGNESIUM

45 degree, double-action, magnesium plate with adjustable stops.

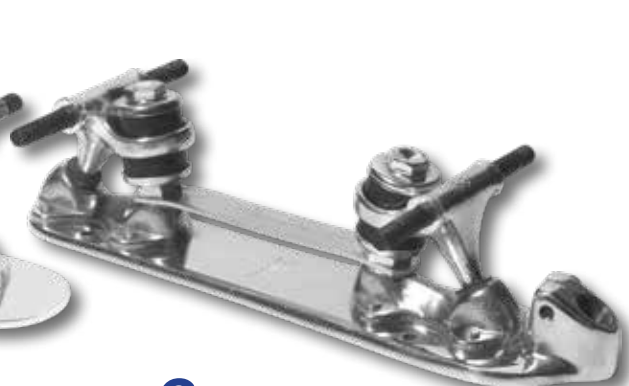
Price: \$



CENTURY NTS

Polished aluminum plate with NO toe stop and 10 degree double-action trucks.

Price: \$



CENTURY

Polished aluminum plate with adjustable toe stop and 10 degree double-action trucks.

Price: \$



CLASSIC

Polished aluminum plate with adjustable toe stop and 10 degree double-action trucks with adjustable pivot pins.

Price: \$

POWER-TRAC

Prettiest plate in the land. Polished aircraft aluminum plates with micro-adjustable 10 degree aluminum trucks.

Price: \$

LORIDE

These plates can be adjusted to fit your wheels ensuring the lowest ride possible. Determine the size wheels you want to run, and then mount your plates to fit.

Price: \$



LASER

Old-school nylon plate comes with adjustable toe-stops and 45 degree trucks in single-action or double-action.

Price: \$

LASER ELITE

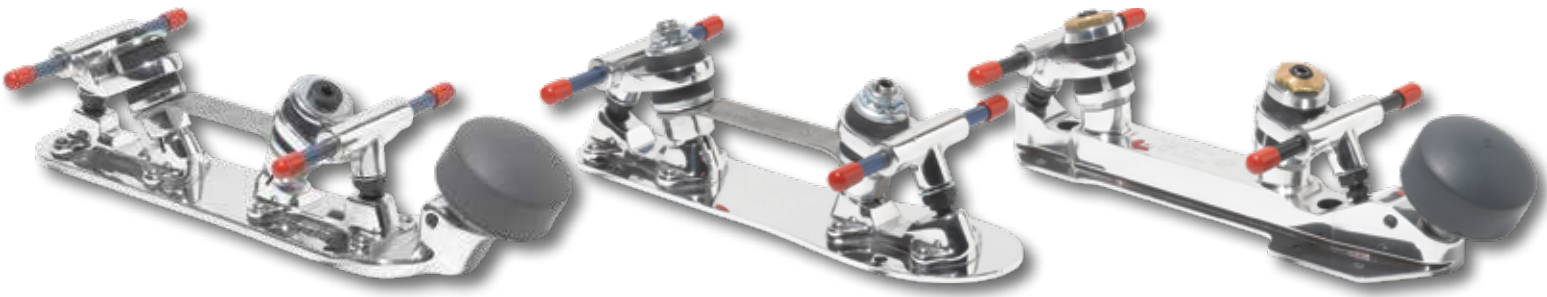
This is the same plate as the Laser, but it comes without a toe stop.

Price: \$

SUPER DELUXE

Polished aluminum plate with adjustable toe stop and 10 degree double-action trucks with adjustable pivot pins. 7mm axles.

Price: \$



IMPERIAL

Polished aluminum plate with adjustable toe stop and 45 degree double-action trucks and adjustable pivot pins. 7mm axles.

Price: \$

FIGURE DELUXE

Polished aluminum plate with NO toe stop and 10 degree double-action trucks with adjustable pivot pins. 7mm axles.

Price: \$

ADVANTAGE

Polished aluminum plate with adjustable toe stop and 10 degree double-action trucks with adjustable pivot pins. 7mm axles.

Price: \$



ROCK DOUBLE-ACTION CUSHIONS

Fit Probe and Rock plates.

Colors: Black, White, Red, Blue, Yellow, Orange, Pink, Purple, Green.

Price: \$



SG SUPER URETHANE CUSHIONS

The double-action cushions give extreme control. Trucks use one barrel cushion and one conical cushion.

Color/Hardness: Blue (72A), Yellow (79A), Purple (85A), Red (93A).

Price: \$



TOE CAPS

Covers the entire toe of the boot. Great for Derby or rental skates.

Colors: Black, Tan.

Price: \$



LEATHER TOE GUARDS

Increase the life of your boots with toe guards.

Color: Tan, Black, Pastel Pink, Sea Breeze, Lavender, Key Lime.

Price: \$



ZERO NUTZ

Nutz won't back off your axle, and they help keep dirt out of the bearings.

Color: Black, Blue, Green, Purple, Red, Orange, Sea Foam.

Price: \$



CRAZY NUTZ

Add some style to your wheels with these stylish locknuts. Sold in 4-packs.

Styles: Bullet, Dice, 8-Ball, Skull.

Price: \$



FOMAC PLUGS

These plugs come in 5/8" or 5/16".

Color: Black, Blue, Green, Pink, Purple, Red, White, Yellow.

Price: \$



JAM PLUGS

Available in 5/8" only.

Color: Black, Blue, Green, Pink, Purple, Red, White, Yellow.

Price: \$



IRIS PLUGS

Now made by Sure-Grip. Best plug made. Available in 5/8" and 5/16".

Color: Black, Blue, Red, White.

Price: \$



ALL-PURPOSE

Basic fixed toe-stop.

Sizes: Junior, Standard.

Color: Black, Blue, Pink, Red, White.

Price: \$



BULLSEYE

Large non-adjustable toe stop.

Color: Black, Blue, Green, Pink, Purple, White.

Price: \$



CARERRA STOP

Small, round adjustable toe stop.

Color: Black, Light Blue, Light Pink, White.

Price: \$



MINI GRIPPER

Small, adjustable toe stop.

Color: Black, Blue, Green, Pink, Purple, White, Red.

Price: \$



GRIPPER

Large, adjustable, toe stop.

Color: Black, Blue, Green, Pink, Purple, White, Red.

Price: \$



NOVA

Adjustable mini speed stop.

Color: Blue.

Price: \$



WEB

Round, adjustable 5/8" toe stop.

Color: Black, Blue, Pink, Purple, White.

Price: \$



SQUARE "DETROIT"

What's old is new again. Sure-Grip has brought back the original square adjustable stop.

Color: Black.

Price: \$



SURE-GRIP RX STOPS

Your stops making you sick? We've got the prescription.

Color: Black, Blue, Green, Purple, Red.

Price: \$



RD ELITE BOUNCE

High-rebound stop with hollow stem. Great starts and quick stops.

Color: Natural.

Price: \$



SNYDER STOPS

The ugly grey just screams quality.

The gold-standard of stops.

Size: Standard, Junior, Dance Plug.

Color: Grey

Price: \$



#93 SKATE KEY

Simple, truck wrench for quads.
Price: \$



ELEPHANT WRENCH

Pocket-sized, all-in-one tool for quads.
Price: \$



SNYDER 2-PIECE BEARINGS PRESS

For skate maintenance on the go.
Price: \$



BONES BEARING PULLER

8mm bearing puller that fits in the pocket.
Price: \$

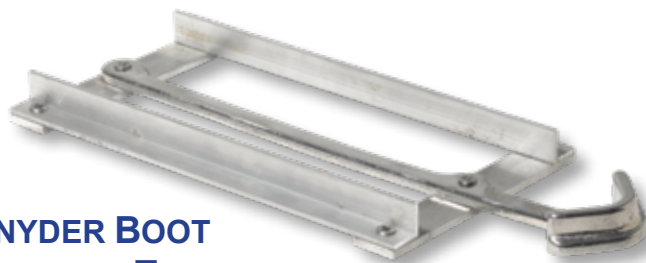
QUBE BEARING PULLER/PRESS

Bench-mount press for your skate room. 8mm bearings. Not for use on aluminum hubs.
Price: \$



SURE-GRIP BEARING PRESS

Travel-size bearing puller/press. 7mm and 8mm bearings. Not for use on aluminum hubs.
Price: \$



SNYDER BOOT MARKING TOOL

Get your plates mounted straight with this tool.
Price: \$



SNYDER BREAK-OFF TOOL

Simple tool to break off mounting bolts.
Price: \$



SCENTURION

Eliminates odors from skates and equipment.
Price: \$



QUBE BEARING CLEANER

8oz. of bearing cleaner. Can be used in Bones Cleaning Unit.
Price: \$



BONES CLEANING UNIT

Add bearings and cleaner, and then shake.
Price: \$





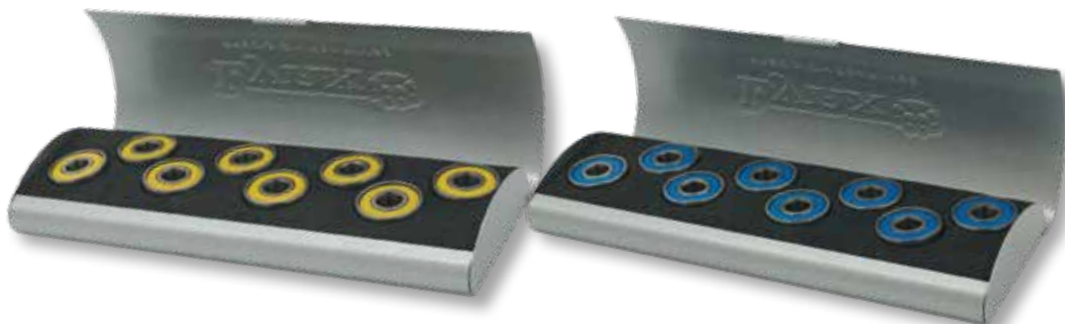
LYNX SWIFT LUBE

Race lube from Lynx.
Price: \$



BONES SPEED CREAM

Bearing cream/lube.
Price: \$



LYNX PERFORMANCE BEARINGS

Chrome racing bearings. 8mm only.
ABEC-5 – Price: \$
ABEC-7 – Price: \$
ABEC-9 – Price: \$



FREESPIN BEARINGS

Great performance & reliability at a great price. 7mm & 8mm.
Price: \$



ROLLERBONES

Great all-around bearings. 8mm only.
Price: \$



BONES REDS

The best go-to bearing in the land. 7mm & 8mm.
Price: \$



BIG BALL REDS

Has 6 larger balls for a quick start and clean roll. 8mm only.
Price: \$



SUPER REDS

Bones took the REDS and made them SUPER. 8mm only.
Price: \$



CERAMIC REDS

Super REDS with ceramic balls. 8mm only.
Price: \$



QUBE TEAL

Great all-around ABEC-5 bearing. 8mm only.

Price: \$



QUBE JUICE

Great all-around ABEC-5 bearing. 8mm only.

Price: \$



QUBE 8-BALL

Patterned after the Fafnir bearing, 8 balls help distribute the load in turns. 7mm & 8mm.

Price: \$



QUBE SWISS

Features 3D technology in a Swiss bearing. 7mm & 8mm.

Price: \$



QUBE CERAMIC

Ceramic balls increase the life and performance of the bearing. 8mm only.

Price: \$



UNIQ SWISS

All-new Swiss bearing from UniQ racing. 8mm only.

Price (16-pk): \$



UNIQ CERAMIC

UniQ's ceramic bearings offer performance and durability. Comes with extra lube. 8mm only.

Price (16-pk): \$



KEMISTRY

The best-priced bearings on the market. Kemistry bearings also come with aluminum bearing spacers. 8mm only.

Super-7 – Price: \$

Swiss – Price: \$

Ceramic – Price: \$



#BC8

#BC6

#BC9

#BC10

#BC16



#BC17

#BC23

#BC25

#BC26

#BC28



#BCBK

#BCBL

#BCFL

#BCLP

#BCPK



#BCPU

#BCRD

#BCWH

#BCYL

BOOT COVERS

Made to fit high-top roller skates and ice skates.

Order by item #.

Price: \$



SURE-GRIP SIZING STICK

Helps you make sure you order the right size.

Price: \$



CONTOUR INSOLES

A good pair of boots will outlast the insoles. Add some comfort to your skates.

Sizes: 9J-15.

Price: \$



POMPOMS

If you look closely, you'll see we've added some new colors like teal and mint to our pom-pom lineup.

Price: \$



SURE-GRIP SADDLE BAGS

Throw your skates over your shoulder with this nylon skate bag.

Color: Aqua, Black, Passion Pink.

Price: \$



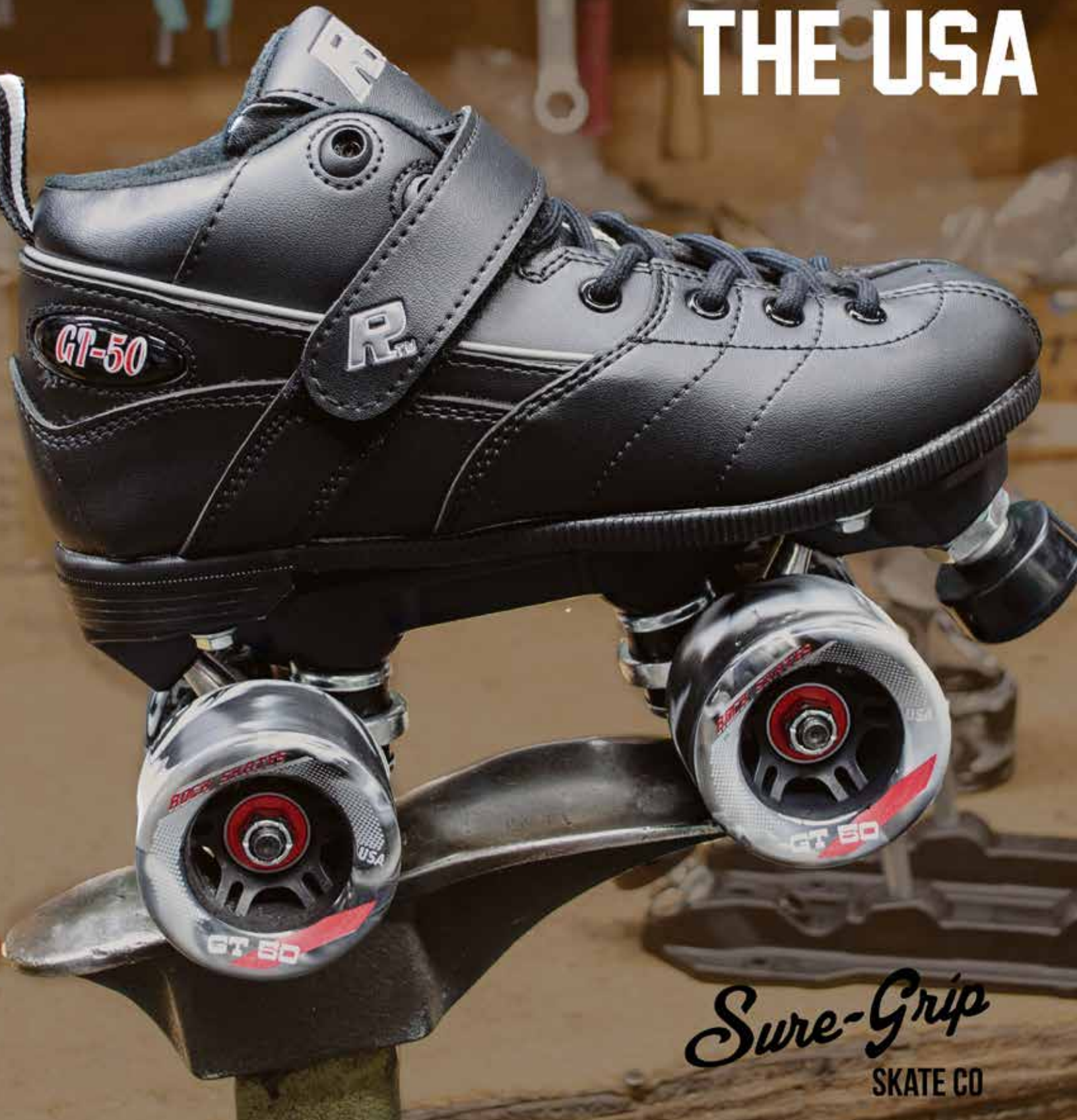
PACER SKATE BAGS

Perfect for carrying your skates to the rink or park. Big enough for traditional quads and smaller inline.

Color: Black, Donut.

Price: \$

**PROUDLY
ASSEMBLED IN
THE USA**



Sure-Grip
SKATE CO